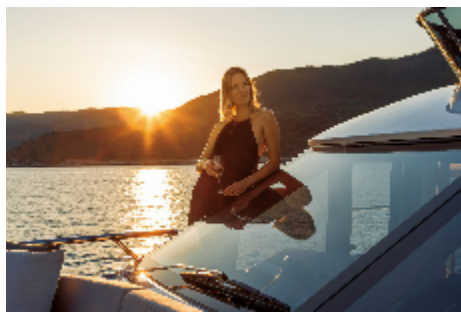




YACHTFINDERS
GLOBAL

Absolute 60 Fly 'Prisma' - New Model



The Evolution of The Absolute Shipyard:

Launching the new 60 FLY for Generation 2022

Absolute Yachts approaches the start of boating season creating high expectations for the Generation 2022 new models. A very optimistic opening awaits our shipyard thanks to the launch of exciting new models.

The revolution will take place with the arrival of the 60 FLY, a completely new model called “The Absolute Prisma”.

A yacht that will redefine the range with new ground-breaking design elements never seen on a Flybridge boat of these dimensions, such as the Owner's quarter at the bow and the aft cockpit terrace, free from any fixed furniture elements. As the prism reveals the several colours through the light, the 60 FLY by Absolute is the Prisma revealing an overturning of perspectives, an evolution for the range and for the owner, too. With the new 60 FLY, a versatile life on board and the

liveability of the spaces are now ensured.

A new perspective is offered by the bow master cabin – thanks to the Owner's quarter concept: a cabin that

takes up the full beam of the boat, unprecedented on a 60/70-foot yacht. The cabin is raised from the lower deck, the ceiling is high, and the array of textures and colours chosen for the interior design will satisfy even the most refined tastes. The atmosphere is sophisticated and relaxed, dedicated to the owner's comfort and privacy: the walk-in wardrobe, the vanity with a sea view, and the wide side windows to feel fully immersed in nature complete the ambience.

The exterior lines are now enriched by elegant transparencies, thanks to the glazed balustrades that offer breath-taking views from both the fly and the cockpit: the latter, though without fixed elements, can be furnished at the owner's taste for the first time.

From the aft cockpit, there are two comfortable staircases, ideal to reach the wide platform to enjoy a terrace just above the sea; the ample dimensions of the platform offer a comfortable entrance to the crew cabin, through the pantograph door concealed in the transom.

On the upper deck, the Fly area offers a second open-air salon totally immersed in the surrounding landscape, whose generous dimensions are just waiting to be lived: al-fresco galley and dining area, lounge space, high-tech the helm station is framed by elegant design lines, colour contrasts and refined finishes.

Even the bow area is designed for maximum versatility of use thanks to a comfortable sofa with a table, a sunbathing area, and music: social boating and privacy, all in one, day and night.

The Absolute 60 FLY boasts the latest generation technology, featured in modern and ultra-accessorized dashboard-ards, with clear instrumentation always at your fingertips. Both helm stations on the main deck and flybridge have double piloting seats, ergonomic and modern. From the main deck dashboard, a very wide windscreen, with minimized and rounded side support pillars guarantee an unobstructed view of the horizon. Even on the flybridge,

safe navigation topped with conviviality is ensured, thanks to the sofa and sundeck placed next to the helm,

allowing the captain to drive with the company. A third mooring station is also available at the stern, which can be in-integrated in a dedicated cabinet in the cockpit on the starboard side, equipped with a joystick, bow thruster control and engines ignition panel.

Great care for the furniture as well: onboard the Absolute 60 FLY modular furniture can be adapted to the actual use. The areas are dedicated to the social moments with family and friends, to enjoy panoramas in complete free-dom: various configurations are available for the owner to choose from, in order to fully enjoy the onboard life as desired.

Finally, the green attitude of the shipyard proves itself thanks to the opportunity of integrating the solar panels into the hard-top to ensure a lower environmental impact. Moored at anchor, the owner can enjoy the silence completely immersed in nature, by using solar energy to operate the essential services on board, without the continuous use of generators.

The safety standards fear no competition even with larger models, and the usability of the space is top-notch both for the storage and for maintenance and spaces inspections activities.

General

Year:	2024
Price:	\$POA
Additional Charges:	None
Broker Quote:	Unrivalled quality, design and performance from the Absolute yard in Italy - and all at an exceptional price!
Boat Type:	Power
Hull Type:	Planing Motoryacht
Location:	New Boat
Engine/Fuel:	Diesel
Hull Material:	GRP

Dimensions

Length:	60 ft
LOA:	18,66 m
Beam:	4,94 m
Draft:	1.41m
Displacement:	32 TON

Engines

No. of Engines:	2
Engine Brand:	Volvo Penta 2xD11 IPS950
Engine(s) HP:	533hp
Cruising Speed:	26knots
Max Speed:	32knots

Builder / Designer

Builder:	Absolute Yachts
Designer:	Absolute Design Group

Tankage

Fuel:	2.800 l
Water:	730 l

Accommodation

- 3 cabin 2 head layout w/ 4th cabin option (crew cabin)
- Full beam master stateroom
- Forward VIP cabin
- Midship central cabin w/ (2) single bunks
- Aft galley
- "U" shaped dinette
- "U" shaped settee to port with 2-seat settee to starboard
- Lower helm station w/ Leather Captain seat w/ armrest sliding backrest and footrest
- Flybridge features large sunbathing cushion w/ reclining backrest
- "U" shaped sofa with backrests
- Teak table
- Shaped and raised radar arch
- Upper helm station w/ full controls and instrumentation

Electronic

- (2) Raymarine GPS/Chartplotters w/ 12" displays
- Autopilot
- Volvo EVC panel w/ 7" display (lower helm)
- Full engine instrumentation and controls (upper helm)
- (2) Manoeuvring joysticks
- Trim tabs
- Anchor windlass control (lower and upper helm)
- Water in-fuel alarms
- Bilge pump alarms
- (2) VHF radios
- Radio w/ MP3 player USB port and loudspeakers

Inventory

- 3.5Kw generator
- 1800 watt inverter
- Microwave / grill / cooktop
- 230V -50Hz house style appliances
- Fume extractor
- Ash coloured durmast oak floor in galley

Additional Images

