



Selene 38 Voyager

Description

BIGGEST 38' FAMILY CRUISER IN THE WORLD!
The Selene 38 Voyager aft cabin is a legend... A happy and classy gentleman's yacht which has been cruising in British Columbia, the Bahamas, the Greek islands and South-East Asia for decades already. This beautiful and charming pocket yacht has always been incredibly popular because of its unique layout which guarantees

General

Year:	2024
Price:	\$POA
Additional Charges:	Plus GST, Duty & Freight
Boat Type:	Power
Hull Type:	Trawler

Location:	New Boat
Engine/Fuel:	Diesel
Hull Material:	GRP

Dimensions

Length:	38 ft
LOA:	12.7m
LWL:	11.09 m
Beam:	4.42m
Draft:	1.42m
Bridge Clearance:	7.44 m
Displacement:	18 ton

Builder / Designer

Builder:	Jet Tern Marine
Designer:	Howard Chen

Conatruction

- Bi-axis uni-direction stitched roving mat
- Glass Mat
- Divinycell core sandwich structure for hull side shell above waterline and superstructure
- Longitudinal stringers and transverse frames system
- 3 watertight bulkheads
- chain locker, fwd. E/R, after E/R)

Engines

No. of Engines:	1
Engine Brand:	Cummins or John Deere
Engine(s) HP:	180 hp
Cruising Speed:	9 Knots
Max Speed:	11 Knots

Tankage

Fuel:	2649 Litres
Water:	908 Litres
Holding:	227 Litres

On Deck

- Manship S/S #316 opening portlights
- Manship S/S #316 hatches for fwd. and after stateroom
- Aritex port and starboard sliding door
- Taco S/S #316 solid upper and lower dual fender rails
- S/S #316 handrail for foredeck, aft. deck and flybridge decks
- S/S #316 telescope ladder

- Teat Burgee and flagstaffs
- Aluminium alloy window frames w/ powder coated
- S/S #316 bow and stern flag pole socket
- Teak cap rail for side and after. deck
- Freeing port for fore, side, aft. deck and flybridge decks
- Moulded inlay pattern non-skid to fore, side, aft. deck and flybridge decks
- Transom gates with step plate
- Side deck side gate, P&S
- FRP steps from aft. deck to flybridge
- Perko exterior courtesy lights
- Scandvik transom shower
- FRP settee at the cockpit
- FRP hatch to lazarette w/ S/S #316 ladder
- International anti-fouling paint
- International Gelshield primer coating
- International boot top line

Flybridge

- Helm station in centre w/ console box
- S/S #316 destroyer type steering wheel
- S/S #316 grab rail
- S/S #316 bracket for fender
- Forespar Aluminum alloy hinged mast and boom
- Todd helm seat
- Drink well w/ FRP lid
- Entertainment space on the flybridge deck
- AFI 12V DC outlet

Inside

- Light teak or cherry veneer (straight grain or mountain grain)
- R & C door locks and handles for interior sliding doors
- Schweppes door locks and handles for bathroom
- Lamp positive latching for all locker doors and drawers
- Solid teak and holly sole w/ teak border
- Fiberglass "I" shaped floor beam
- Vinyl and EVA foam panels for ceiling lining

- Draperies for the saloon and each stateroom
- Settee with fabrics
- Hanging lockers w/ automatic light
- Storage cabinets
- Epifanes one part varnish for interior

Saloon

- L-shaped settee w/ 5" cushion set
- Fold-up dining table
- TV cabinet w/ sliding doors
- Emergency hatch to the engine room
- Sliding door for saloon entrance
- Cantalupi dome lights
- Cabin reading light
- Corian or Granite countertop
- Exposed roof beams w/ wood caps
- Teak overhead grab rail
- Bamboo blinds
- Self-lock window stopper

Helm Station

- Helm station w/ instrument panels
- Upper console panel box above steering station
- Digital Amp gauge
- Digital Volt gauge
- Hynautic hydraulic engine control system
- Hi-seat w/ footrest
- Sliding door P&S
- Cantalupi dome lights

Gallery

- Overhang cabinets with wine glass storage
- Corian or Granite countertop and backsplash
- Force 10 3-burners propane stove and oven w/ alarm monitor panel set
- Jabsco 12V DC electric exhaust fan above the stove
- Tundra DC/AC refrigerator
- Single lever swivel type faucet
- S/S double sinks
- Drawers and cabinets w/ shelves under counter
- Overhang cabinets with wine glass storage

Master cabin

- Queen-size berth w/ 5" foam mattress
- Drawer bureaus and side cabinets
- Cedar-lined wardrobe w/ automatic light
- Teak or Cherry veneer countertop
- Cabin reading lights
- Cantalupi dome lights
- Manship escape hatch
- Manship S/S #316 opening portlights

- Cantalupi step lights
- Teak stair from the pilothouse to fwd. stateroom

Ensuite

- The head compartment at the portside
- Vanity unit
- Porcelain washbasin w/ integral countertop
- Shower room w/ teak removable grating panel at the starboard side
- Single lever hot and cold water shower faucet
- Tecma 12V DC freshwater toilet
- Jabsco 12V DC dia. 3" exhaust fan
- Cantalupi dome lights
- Hubbell waterproof AC outlet in head
- Mirror with teak frame
- Medicine cabinet
- S/S #316 tissue paper holder

Guest En-suite

- Head/shower room located at portside
- Vanity unit
- Porcelain washbasin w/ integral countertop
- Single lever hot and cold water shower faucet
- Teak removable grating panel
- Tecma 12V DC freshwater toilet
- Jabsco 12V DC dia. 3" exhaust fan
- Cantalupi dome lights
- Hubbell waterproof AC outlet in head
- Mirror with teak frame

Guest Cabin

- Vee berth arrangement w/ 5" foam mattress /li>
- Cedar-lined wardrobe w/ automatic light
- Cantalupi dome lights
- Cabin reading lights
- Manship escape hatch
- Manship S/S #316 opening portlights
- Front cabinets

Mechanical

- Single Cummins QSB5.9 230HP@2600RPM or John Deere 4045AFM85
- Deluxe engine panel w/ complete instrumentation and alarms
- Complete engine instrumentation at control station with
- Hynautic hydraulic engine control system at each helm station
- Aqua #22 propeller shaft (dia. 2-1/4"=57mm)
- PYI dripless shaft seal
- Faster NiAlBr 4 blade propeller

- Jabsco 12V DC dia. 4" engine room blowers
- FRP drip pan under engine
- Hydraulic FRP wet box muffler
- Full protected FRP rudder w/ S/S #316 rudder shaft
- Engine overheat and low oil pressure alarm
- Fluorescent light for E/R
- Watertight door to the engine room
- Soundown E/R sound insulation system including damping tile, 3" sound insulation foam & Aluminum perforated plate

Steering System

- Hynautic hydraulic steering system for pilothouse and flybridge
- Handcrafted teak wheel in the pilothouse and S/S #316 dia. 28" wheel on the flybridge
- Emergency tiller
- Full protected FRP rudder

Electrical System

- 120V AC or 240V AC system
- Marinco 120V/240V 60hz 30Amp shore power inlets
- Marinco TV and Tel inlet
- Hubbell AC outlets throughout the boat, and GFCI in head and flybridge
- Newmar 3-bank 120V / 240V AC battery charger system
- Newmar 30 amp galvanic isolator
- Tundra upright DC/AC refrigerator
- Raritan 12 gallons 120V or 240V AC dual heating source hot water heater
- AC/DC control panel w/ polarity indicator lights, appropriate switches, meters and breakers
- Copper bonding strap w/ ground cable attachment for each fitting
- Two Zinc plates at transom for grounding system

DC Electrical System

- 12V DC system
- Muir HR1200 windlass w/ control switches at foredeck and each helm stations
- Sidepower 8hp electric bow thruster
- AFI 12V DC air horn
- Aqua Signal navigation lights
- Exalto 12V DC electric wipers for 3 front windshields w/ freshwater wash
- Rule 12V DC sump pumps w/ automatic float switches
- Rule sump pumps w/ automatic float switches
- Jabsco 12V DC dia. 3" electric exhaust fan above the stove
- Cantalupi accommodation dome lights
- Cantalupi step lights for interior and exterior
- Floject 12V DC electric pressurized fresh water pump
- Perko step lights for exterior
- Stereo speakers in saloon
- Vision AGM deep cycle batteries for house service, engine and generator starting
- Vimar Switch

Plumbing System

- One FRP water tanks w/ shut off valve and sight gauge, total capacity 200 US gallons
- One FRP holding tank w/ Y-valve, Jabsco macerator pump, deck discharge outlet and remote full display panel in the master head, total capacity 55 US gallons

Fuel System

- Total capacity 600 US gallons, two FRP fuel tanks w/ internal baffles, sumps, balancing lines, inspection ports and plates
- Racor 75/900 Max dual fuel filter/water separator for engine
- Ball valve for fuel system
- Electric fuel gauge
- Magnetic fuel sight gauge for each fuel tank
- Fuel management system

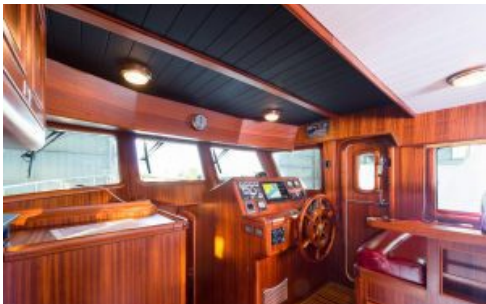
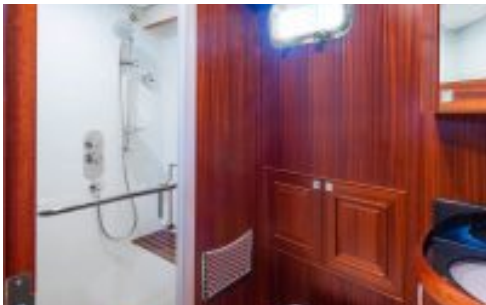
Anchoring

- Muir 12V DC electric windlass
- Muir chain stopper
- S/S #316 self-launching anchor roller
- S/S #316 dia. 5" diameter Samson post
- S/S #316 hawsehole with cleats

- FRP bow pulpit with chain wash dam
- Pilothouse and foredeck windlass control switch

Additional Images







Tourist Delivery

