



Selene 54 Classic The Most Popular Selene Trawler

Description

The most popular Selene trawler Since its introduction in 2002, the Selene 54, an evolution of the famous Selene 53, has become the most popular model in the Selene range. It's easy to see why, with a powerful combination of live-aboard comfort and excellent long-range cruising in safety for a couple and their guests. With no less than eight different living areas to...

General

Year:	2025
Price:	\$POA
Additional Charges:	Plus GST, Duty & Freight
Boat Type:	Power
Hull Type:	Trawler
Location:	Offshore

Engine/Fuel: Diesel

Hull Material: GRP

Dimensions

Length:	54 ft
LOA:	18.24 m
LWL:	15.93 m
Beam:	5.08 m
Bridge Clearance:	7.7 m
Displacement:	43.5 Tons

Builder / Designer

Builder:	Jet Tern Marine
Designer:	Howard Chan

Construction

- Cook gelcoat for hull, deck, superstructure and non-skid
- Vinylester resin for the first five layers of lamination
- Bi-axis uni-direction stitched roving/mat
- Glass mat
- Divinycell core sandwich structure for hull side shell and superstructure
- Longitudinal stringers and transverse frames system
- Five watertight bulkheads (chain locker, fwd. E/R, after E/R, lazarette)
- Collision locker

Engines

No. of Engines:	1 or 2
Engine Brand:	Cummins or John Deere
Engine(s) HP:	260 hp
Cruising Speed:	9 knots
Max Speed:	11 knots

Tankage

Fuel:	5,677 Liters
Water:	1,514 Liters
Holding:	2,794 Liters

Exterior

- Manship S/S #316 opening portlights with safety covers
- Manship S/S #316 hatches for pilothouse and fwd. stateroom
- Diamond/Sea-Glaze Dutch doors for pilothouse P&S, salon and E/R entrance
- Taco S/S #316 solid upper and lower dual fender rails
- Oceanair hatch shade w/ insert screen
- S/S #316 handrail for fore deck and dinghy deck
- S/S #316 telescope swim ladder
- S/S #316 dia 2-1/2" aft. deck overhang support posts

Find the perfect anchor for your boat

- Aluminium alloy window frames w/ powder coated
- Teak cap rail for side deck and aft. deck
- S/S #316 bow and stern flag pole socket
- Teak burgee and flag staff
- Freeing port for fore, side and aft. deck
- Moulded inlay pattern non-skid to fore, side, aft, flybridge decks and swim platform
- Portuguese bridge access gate to the foredeck
- After the deck side gates
- Transom gates swing-out
- Portuguese bridge access gate to foredeck
- Storage lockers inside the Portuguese bridge
- S/S #316 self-lock type exterior gate handles
- Cantalupi exterior dome lights
- Cantalupi exterior courtesy lights
- Internal settee w/ cushion moulded into front or Portuguese bridge
- International anti-fouling bottom paint (Tin free)
- International Gelshield primer coating
- Awlgrip boot top-line

Flybridge

- Helm station in centre w/ console box
- S/S #316 destroyer type steering wheel
- S/S #316 grab rail
- FRP sliding watertight door from flybridge to pilothouse
- FRP BBQ cabinet
- Polar washbasin w/ Scandvik folded faucet

OnDeck

- Dedicated spiral stair to flybridge with S/S #316 handrail or cabinet instead
- Scandvik transom shower
- FRP hatch to lazarette w/ S/S #316 ladder

- Forespar Aluminum alloy hinged mast and boom (or FRP radar arch)
- AFI 24V DC outlet
- Todd helm seat
- Drink well w/ FRP lid
- Chart countertop
- Tinted plexiglass windscreen with S/S #316 bracket
- Dinghy space on the flybridge deck
- Optional hydraulic davit available for lift
- Table and settee with storage underneath

-
- Light teak (straight grain or mountain grain)
 - Schweppes door locks and handles for interior doors
 - Lamp positive latching for all locker doors and drawers
 - Cantalupi lights system
 - Cabin reading lights
 - Solid teak and holly sole w/ teak border
 - Fiberglass "I" shaped floor beam
 - Vinyl and EVA foam panels for ceiling lining
 - Draperies for the saloon and each stateroom
 - Selected sliding windows with/ tinted tempered glass
 - Vimar switches
 - Epifanes one part varnish for interior

Gallery

- Countertop w/ Integral bar

Saloon

- L-shaped settee w/ 5" foam cushion
- Storage underneath the settee
- Hi-lo fold-up dining table
- Entertainment centre for TV and sound system
- Emergency hatch to engine room
- Cantalupi dome lights
- Cabin reading light
- Diamond/Sea-Glaze Dutch door for salon entrance
- Corian or Granite countertop
- Exposed roof beams w/ wood caps
- Teak overhead grab rail
- Bamboo blinds w/ draperies
- Self-lock window stopper

Saloon

- Helm station w/ instrument panels

Find the perfect anchor for your boat

- Upper console box above steering station
- Electronic engine control system
- Hi-seat w/ footrest and table – providing a near panoramic view
- Diamond/Sea-Glaze Dutch doors for P&S side
- Sliding chart table w/ drawer
- Sliding watch berth behind hi-seat
- Dedicated teak stair from the pilothouse to F/B
- Cantalupi dome lights
- Cantalupi step lights
- Daniel Smith chart lights
- Cabin reading lights
- Teak overhead grab rails

Master Cabin

- Queen-size berth w/ 6" foam mattress
- Side cabinets and bureau drawers
- Cedar-lined wardrobe with/ automatic light
- TV cabinet
- Wood veneer countertop
- Cantalupi reading lights
- Cantalupi dome lights
- Mirror w/ teak frame
- Manship S/S #316 opening portlights

Accommodation

- Tecma 24V DC freshwater toilet
- Jabsco 24V DC dia. 3" exhaust fan
- Cantalupi dome lights
- Formica finish headlining and FRP bulkhead
- Corian or Granite countertop and backsplash
- Vanity unit w/ integrated wash basin
- Tempered clear glass sliding shower door
- Mirror w/ teak frame
- Grohe single lever hot/cold water shower faucet
- Medicine cabinet
- Shower room w/ teak removable grating panel
- Granite floor (or teak and holly floor with teak border)
- S/S #316 tissue paper holder
- Manship S/S #316 opening portlights

Vip Cabin

- Queen-size berth w/ 5" foam mattress
- Front and side cabinets
- Hanging lockers w/ automatic light
- Wood countertop
- Cabin reading lights
- Cantalupi dome lights
- Windline telescope escape ladder
- Manship S/S #316 hatch
- Manship S/S #316 opening portlights

Guest Cabin

- Hi-lo berth
- 4" foam mattress for each berth
- Hanging lockers w/ automatic light
- Overhead cabinet
- Bookshelves
- Overhead cabinet at port side
- Cabin reading lights
- Cantalupi dome lights
- Choice of optional floorplan

14

- Single Cummins QSL9 405HP@2100RPM (or Single John Deere 6125AFM 389HP@1900RPM,M2)
- Electronic engine control system at each helm station

13

- Tecma 24V DC freshwater toilet
- Shower room w/ teak removable grating panel
- Cantalupi dome lights
- Tempered clear glass sliding shower clear door
- Vanity unit w/ integral wash basin
- Grohe single lever hot and cold shower faucet
- Granite floor (or teak and holly floor w/ teak border)
- Mirror w/ teak frame
- S/S #316 tissue paper holder

15

- Hynautic hydraulic steering system for pilothouse and F/B
- Handcrafted teak wheel in pilot house and S/S #316 dia. 30" wheel on F/B
- Emergency tiller

- Full protected FRP rudder

16

- 120V AC and 240V AC system
- Northern Lights 12Kw. Generator w/ sound shield, muffler and remote start switch panel located in P/H, including dedicated 120 Amp/hr starting battery in FRP box with lid
- Delco 105 Amp engine alternator
- Mastervolt 120V / 240V AC battery charger system
- Newmar Integrated galvanic isolator
- Splendid washer/dryer
- Grunert 120V/230V AC holding plate freezer

17

- 24V DC system
- Maxwell HWC 2200 windlass w/ up/down switches at foredeck and each helm stations
- Aqua Signal navigation lights
- Kahlenberg air horn
- Exalto 24V DC electric wipers for three front windshields, including fresh water wash
- Johnson 24V DC automatic water pressure pump with accumulator tank
- Rule sump pumps w/ Ultra float switches

- Vision AGM deep cycle batteries are for house service, engine, and generator starting.
- Cantalupi accommodation dome lights
- Cantalupi step lights for interior and exterior
- Cabin reading lights
- Prewiring for Stereo speakers in the stateroom

Fuel System

- Total capacity 1,300 US gallons, two FRP fuel tanks w/ internal baffles, sumps, balancing lines, inspection ports and plates
- Racor 75/1000 Max dual fuel filter/water separator for the main engine
- Racor 900MA fuel filter/water separator for generator
- ESI fuel polishing system
- Racor USCG and CE-certified fuel line hose
- Parker ball valve for fuel system
- Electric fuel gauge
- Magnetic fuel sight gauge for each fuel tank
- Fuel management system
- Reverso oil change pump

Plumbing System

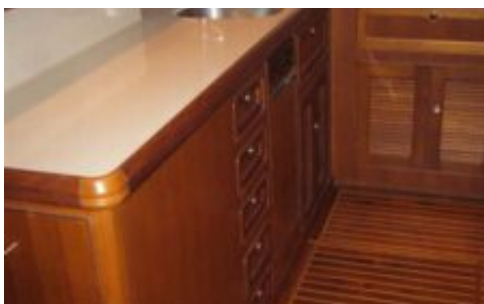
- Two FRP water tanks w/ shut off valve, total capacity 400 US gallons
- One FRP holding tank w/ Y-valve and Jabsco macerator pump, deck discharge outlet and remote full display panel in the master head, total capacity 120 US gallons
- Electric water gauge
- Plastic water piping system
- Sea cocks on all through hull fittings with double hose clamps
- Bronze basket type internal sea water strainer for main engine
- Rule electric bilge pumps w/ Ultra float switch
- Whale manual bilge pump
- Rule sump pumps in both master and guest head
- Status panel w/ warning signal in helm station to warn of bilge pump operation

- FRP bow pulpit with chain wash dam
- Maxwell 24V DC horizontal electric windlass
- S/S #316 self-launching anchor roller
- S/S #316 dia. 5" diameter Samson post
- S/S #316 hawse hole with cleat (8 units)
- Freshwater chain wash down

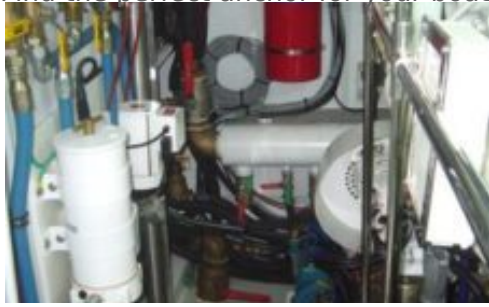
- Vimar switches with dimmers
- S/S #316 frame for Bimini top
- Sidepower 11hp electric bow & stern thruster
- S/S #316 window frames
- Teak deck to side, aft. decks and swim platform
- Portuguese side door
- The second helm seat on the flybridge
- The 3rd station at cockpit

Additional Images









Find the perfect anchor for your boat